

**Emerald Coast Regional Council
Regional Rural Transportation Program
Technical Advisory Committee
Meeting Agenda**

Wednesday, May 20, 2026 – 9:30 a.m.

GoToWebinar:

<https://attendee.gotowebinar.com/register/8207159864745973845>

Call To Order

Welcome and Introductions – Latilda Hughes-Neel, Chair

Public Forum

Please obtain a speaker request form from ECRC staff.

PRESENTATIONS

1. US 90 Trail Corridor Alliance

Cassidy Haney, Florida DEP Office of Greenways and Trails

2. RRTP Public Participation Plan

Rae Emary, ECRC Staff

FDOT Update, Tanya Branton, FDOT

ACTION

3. Approval of the February 18, 2026 Meeting Minutes

No Presentation

4. Regional Rural Transportation Plan (RRTP) Project Priorities

Gary Kramer, ECRC Staff

Info Packet

- a. US 90 Shared-Use Trail PD&E Study Handout (Okaloosa County)
- b. US 90 Trail PD&E Study Handout (Walton County)

ADJOURNMENT

Public participation is solicited without regard to race, color, national origin, sex, age, religion, disability, or family status. Reasonable accommodations for access will be made in accordance with the American with Disabilities Act and for languages other than English. Please notify ECRC Public Involvement of any special requirements or requests at publicinvolvement@ecrc.org or email Leandra Meredith at Leandra.Meredith@ecrc.org. You may also call 1-800-226-8914, ext. 203 or 1-800-955-8771 for TTY-Florida. All requests should be made at least 48 hours in advance.

El público está invitado a participar, sin distinción de raza, color, origen nacional, sexo, edad, religión, discapacidad o estado familiar. En acuerdo con el American with Disabilities Act, se harán arreglos razonables para el acceso a la reunión. Si su idioma principal no es inglés, en acuerdo con Title VI, usted puede pedir el servicio de un intérprete. Para pedir asistencia, comuníquese con Ada Rivera Clark, por carta electrónica al ada.clark@erc.org, por teléfono llame al 850-332-7976, ext. 227 o puede llamar al 1-800-955-8771, para TTY-Florida. Por favor póngase en contacto con 48 horas de antemano.

Agenda Item

1



Agenda Item Number: 1

SUBJECT: US 90 Trail Corridor Alliance Presentation from Cassidy Haney, Office of Florida Greenways and Trails, Florida Department of Environmental Protection Office of Greenways and Trails

BACKGROUND: A presentation will be provided at the meeting for the ongoing efforts of the US 90 Trail Corridor Alliance.

RECOMMENDED ACTION: This item is for information only.

Agenda Item

2



Agenda Item Number: 2

SUBJECT: Rural Regional Transportation Plan (RRTP) Public Participation Plan (PPP) Update

BACKGROUND: In 2019, the ECRC incorporated a Regional Rural Transportation Plan in conjunction with the Florida-Alabama, Okaloosa-Walton, and Bay County Transportation Planning Organizations (TPOs.) The counties included in the plan are Escambia, Santa Rosa, Okaloosa, Walton, Bay, Holmes, and Washington.

Part of this project includes a Public Participation Plan (PPP). The PPP provides guidelines for achieving quality public involvement when developing major planning documents and programs. Effective public participation begins early in the planning process and continues throughout, helping to avoid, minimize, and mitigate negative impacts while providing the best solutions. The PPP is due to be updated to ensure the most effective public outreach is being implemented for the success of the plan.

The RRTP Technical Advisory Committee (TAC) will review the updated draft PPP and will make recommendations. The plan will be opened for a 45-day public review process and will be sent to agency partners for review. All comments are requested to be sent in by Monday, July 6, 2026 and may be submitted to marketing@ecrc.org

The draft Public Participation Plan may be found at: www.ecrc.org/RRTP

RECOMMENDED ACTION: This is an information-only item and will be presented for adoption in August. Contact the marketing department at Marketing@ecrc.org if you have any comments or if additional information is needed.

Agenda Item

3



Agenda Item Number: 3

SUBJECT: Consideration of Resolution ECRC 2026-07 Adopting the Regional Rural Transportation Plan (RRTP) Project Priorities for FY 2028-2032

BACKGROUND: In February of 2023, an RRTP was adopted by the Emerald Coast Regional Council (ECRC), which included a project priorities list. A major update to the RRTP occurs every five years; however, as with the TPO, the RRTP project priorities are reviewed and adopted annually by the ECRC and are based on the adopted RRTP.

At the April 17, 2024 meeting, the Board opened the cycle for the RRTP process to move toward mirroring the TPO Project Priorities process that allows the Florida Department of Transportation (FDOT) to fold in the rural area projects to the FDOT five-year work program. The FY 2028-2032 RRTP Project Priorities marks the third year of development of the Project Priorities in the rural areas represented by the ECRC.

The Project Priorities document consists of the top ten projects in each category in the adopted RRTP. Once the FY 2028-2032 RRTP Project Priorities have been adopted by the ECRC, they will be sent to FDOT to use as a guide to develop the FDOT FY 2028-2032 Work Program. The FY 2028-2032 RRTP Project Priorities have updated based on the FY 2027-2031 FDOT Work Program. The following is the FY 2028-3032 Regional Rural Project Priorities development schedule:

- February 18, 2026 – Kickoff of the FY 2028-2032 Project Priorities **(Completed)**.
- March 18, 2026 – RRTP TAC Committee Workshop 10:00 a.m. **(Completed)**.
- March 18, 2026 to April 30, 2026 Public Outreach **(Completed)**.
- May 20, 2026 – Public Workshop Chautauqua Building
- May 20, 2026 – TAC and ECRC meetings approval of FY 2028-2032 Project Priorities.

ATTACHED:

- Resolution ECRC 2026-07
- March 18, 2026 - RRTP TAC Committee Workshop Summary
- Draft FY 2028-2032 Regional Rural Transportation Plan Project Priorities
Interactive map and dashboard available at www.ecrc.org/RRTP

RECOMMENDED ACTION: A motion authorizing the ECRC chair to sign Resolution ECRC 2026-07 adopting the FY 2028-2032 Regional Rural Transportation Plan Project Priorities. This motion is recommended to maintain the August 1, 2026 submittal deadline to FDOT. Contact Gary Kramer, ECRC staff, at 850-332-7976, Ext. 219 or gary.kramer@ecrc.org if additional information is needed.

**RESOLUTION ECRC 2026-07
A RESOLUTION OF THE EMERALD COAST
REGIONAL COUNCIL ADOPTING THE FY 2028-
2032 REGIONAL RURAL TRANSPORTATION
PLAN PROJECT PRIORITIES**

WHEREAS, the Emerald Coast Regional Council (ECRC) is partnering the Florida-Alabama Transportation Planning Organization (TPO) to develop a comprehensive Smart Regions Master Plan; and

WHEREAS, the Regional Rural Transportation Plan was adopted in February 2023; and

WHEREAS, the FY 2028-2032 Project Priorities are based on the Regional Rural Transportation Plan; and

WHEREAS, the FY 2028-2032 Project Priorities were presented at a Transportation Advisory Committee Workshop and a public workshop; and

WHEREAS, the FY 2028-2032 Project Priorities will be submitted to the Florida Department of Transportation to use a guide to build their FY 2028-2032 Tentative Work Program.

NOW, THEREFORE, BE IT RESOLVED by the Emerald Coast Regional Council that:

The Emerald Coast Regional Council (ECRC) adopts the FY 2028-2032 Regional Rural Transportation Plan Project Priorities.

Duly passed and adopted by the Emerald Coast Regional Council on this 20th day of May 2026.

BY: _____
Kurvin Qualls, Chair

ATTEST: _____
Kandase Lee, Chief Executive Officer ECRC



March 18, 2026 - RRTP TAC Committee Workshop Summary

1. A question was asked whether any funding is identified for the projects that are identified as priorities.

No funding is listed for the projects that are identified as Project Priorities for the Regional Rural Transportation Plan. The Regional Rural Transportation Plan was created as a Needs Plan with no costs or funding identified for the projects. Like the Long-Range Transportation Plan for the Transportation Planning Organization areas, the Regional Rural Transportation Plan will be updated every five years. Therefore, the next major update to the Regional Rural Transportation Plan may have a Cost Feasible Plan element in addition to the Needs Plan. For the Project Priorities, it is the intent to submit the Project Priorities to the Florida Department Transportation to use as a guide to build their five-year Work Program. Towards the end of 2026, the Florida Department of Transportation will present the FY 2028-2032 Tentative Work Program. At time, it will be known if any of the Project Priorities have been funded. If so, the costs will be provided for the phases that have been funded.

DRAFT R RTP 2028-2032 Capacity Project Priorities

Priority Rank	Project Name/Limits	GIS ID/ FDOT WPID	Programmed Funding					Project/Strategy/Notes	Length (miles)	Funding Sought	
			Phase	2027	2028	2029	2030				2031
1	SR 4 (Okaloosa) From: SR 189 To: US 90 (Milligan) west of Crestview	204	Phase	2027	2028	2029	2030	2031	Widen to 4 Lanes; FDOT Feasibility Study 2021	4.6	PD&E
2	US 29-FL/AL Connector (Escambia) From: I-10 To: State Line	515	Phase	2027	2028	2029	2030	2031	Widen to 6 Lanes; FDOT WP-Safety Project 451057-1: SR 95 from Pond St to AL State Line, PE 2025/CST 2027 - PE complete, letting Fall 2026; FDOT WP-Intersection Improvement Project 454908-1: SR 95 @ CR 196/Barrineau Park Rd, CST 2028; FDOT WP-Resurfacing Project 454618-1: SR 95 (US 29) from Tedder Rd to SR 4 (2.17 mi), PE 2026/CST 2028	37.2	Feasibility Study
3	I-10 Connector (Bay/Washington) From: Panama City To: State Line	516	Phase	2027	2028	2029	2030	2031	New 4 Lane	64.6	Feasibility Study
4	SR 83 (Walton) From: Sunrise/SR 1883 To: SR 2	164	Phase	2027	2028	2029	2030	2031	Widen to 4 Lanes	8.5	PD&E
5	SR 189 (Okaloosa) From: SR 4 To: State Line	510	Phase	2027	2028	2029	2030	2031	Widen to 4 Lanes; FDOT -Feasibility Study 2021	14.4	PD&E
6	SR 97 (Escambia) From: US 29 To: State Line	506	Phase	2027	2028	2029	2030	2031	Widen to 4 Lanes; FDOT WP-Resurfacing Project 450821-1: SR 97 from SR 95 to AL State Line, CST 2026 (let 12/2025)	22	PD&E
7	Holmes/Washington US 90 (Holmes/Washington) From: Holmes/Walton Line To: Jackson County	513	Phase	2027	2028	2029	2030	2031	Widen to 4 Lanes; FDOT WP-Resurfacing Project 457028-1 E of FG&A R/R Bridge to Choctawhatchee River Bridge, PE 2027/CST 2029; FDOT WP-Resurfacing Project 436269-2: SR 10 from Banfill Ave to Hubbard St, CST 2025 - CST underway (est. completion 12/2026); FDOT WP-Bike Path/Trail Project 455414-1: SR 10 from Banfill Ave to Holmes Sheriff's Office, PD&E 2030	37	Feasibility Study
8	SR 4 (Escambia/Santa Rosa/Okaloosa) From: US 29 To: SR 189	509	Phase	2027	2028	2029	2030	2031	Widen to 4 Lanes	39	Feasibility Study
9	Paxton By-Pass (Walton) From: US 331 To: Alabama State Line	126	Phase	2027	2028	2029	2030	2031	New 2 Lane	2.9	PD&E
10	SR 83 (Walton) From: SR 2 To: Alabama State Line	205	Phase	2027	2028	2029	2030	2031	Widen to 4 Lanes	5.9	PD&E

PD&E - Project Development and Environment Study
PE - Preliminary Engineering (Design)

ROW - Right-of-Way
CST - Construction

SIS - Strategic Intermodal System (FDOT roadway designation)

FULLY FUNDED PROJECTS NOT YET CONSTRUCTED

Priority Rank	Project Name/Limits	GIS ID/ FDOT WPID	Phase	2027	2028	2029	2030	2031	Project/Strategy/Notes	Length (miles)	Funding Sought
					9						

DRAFT R RTP 2028-2032 Resurfacing Project Priorities

Priority Rank	Project Name/Limits	GIS ID/ FDOT WPID	Programmed Funding					Project/Strategy/Notes	Length (miles)	Funding Sought	
			Phase	2027	2028	2029	2030				2031
1	Hwy 164 (Escambia) From: Hwy 97 To: US 29	35	Phase	2027	2028	2029	2030	2031	Resurfacing	11.5	PE
2	Hwy 168 (Escambia) From: Hwy 99 To: Hwy 4A	42	Phase	2027	2028	2029	2030	2031	Resurfacing	5.9	PE
3	Singer Road (Washington) From: Silver Lake Road To: Hwy 20	192	Phase	2027	2028	2029	2030	2031	Resurfacing	2.5	PE
4	Hwy 4 (Escambia) From: Hwy 97 To: Hwy 99	44	Phase	2027	2028	2029	2030	2031	Resurfacing	3.4	PE
5	Hwy 147 (Walton) From: US 331 To: SR 85	123	Phase	2027	2028	2029	2030	2031	Resurfacing	3.3	PE
6	State Line Road (Escambia) From: Century Town Limits To: Town Limits	13	Phase	2027	2028	2029	2030	2031	Resurfacing	0.4	PE
7	Hwy 182/Molino Rd (Escambia) From: US 29 To: Hwy 95A	27	Phase	2027	2028	2029	2030	2031	Resurfacing	0.67	PE
8	CR 393 (Okaloosa) From: Poverty Creek Rd To: SR 85	87	Phase	2027	2028	2029	2030	2031	Resurfacing	11.68	PE
9	Rock Hill Rd (Walton) From: High Lonesome Rd To: Walton Bridge Rd	309 440627-3 440627-4	Phase	2027	2028	2029	2030	2031	Request is Resurfacing for Construction. 3 Phases. Another phase will need to be addressed. Phase 3- Walton Bridge Rd to SR 81. Design finished all 3 phases; FDOT WP-Widen/Resurface 440627-3: Rock Hill Rd from High Lonesome Rd to Mckinnon Bridge Rd PH II (1.31 mi), CST 2028; FDOT WP-Widen/Resurface 440627-4: W of Mckinnon Bridge Rd to Walton Bridge Rd, CST 2029	2.98	CST
10	Pecan St (Washington) From: US 90 To: E Church Ave	18 457064-1	Phase	2027	2028	2029	2030	2031	Resurfacing FDOT WP-Resurfacing 457064-1: Pecan St Roadway Resurfacing Improvements, CST 2027	0.16	PE

PD&E - Project Development and Environment Study
PE - Preliminary Engineering (Design)

ROW - Right-of-Way
CST - Construction

SIS - Strategic Intermodal System (FDOT roadway designation)

FULLY FUNDED PROJECTS NOT YET CONSTRUCTED

Funded	Escambia SR 97 From: CR 95-A To: Alabama State Line	24 450821-1	CST	2026	2027	2028	2029	2030	Resurfacing <i>Let Winter 2025</i>	Was #2; Other
Funded	Walton CR 1883 From: SR 83 To: CR 183B	219 448615-1	PE & CST (2024)	2026	2027	2028	2029	2030	Under Design and Funded for Construction (FDOT SCRAP/ARPA) - <i>ongoing</i>	Was #10; Other Projects Moved Up
Funded	Escambia US 29 From: Hwy 4 To: Town Limits/AL State Line	12 451057-1	CST	2026	2027	2028	2029	2030	Safety Project <i>Letting Summer 2026</i>	Was #1; Other

DRAFT R RTP 2028-2032 Safety Project Priorities

Priority Rank	Project Name/Limits	GIS ID/ FDOT WPID	Programmed Funding					Project/Strategy/Notes	Length (miles)	Funding Sought	
			Phase	2027	2028	2029	2030				2031
1	I-10 @ Main Street-Chipley (Washington) Intersection Improvements	524	Phase	2027	2028	2029	2030	2031	High Crash Concentration; FDOT WP Safety Project 455697: Washington County 10 Median Barrier Project, PE 2027/CST 2028	NA	Safety Study
2	Hwy 20 @Hwy 79 (Washington) Intersection Improvements	191	Phase	2027	2028	2029	2030	2031	Need Turn Lane & Turn Arrow	NA	PE
3	US 29 & SR 97 @ Crabtree (Escambia) Intersection Improvements	517	Phase	2027	2028	2029	2030	2031	High Crash Area; FDOT WP Resurfacing Project 450821-1: SR 97 Atmore Hwy from SR 95 to AL Line, CST 2026, let December 2025	NA	Safety Study
4	Munson Hwy (Santa Rosa) From: East Gate Rd To: SR 4	127	Phase	2027	2028	2029	2030	2031	Paved Shoulders; Will Improve Safety Line of Sight; (project extends 12.51 mi beyond Rural Area)	15.1	Safety Study
5	US 90 @ SR 79 Bonifay (Holmes) Intersection Improvements	523	Phase	2027	2028	2029	2030	2031	High Crash Concentration; FDOT WP Bike Path/Trail Project 455414-1: US 90 from Banfill Ave to Holmes Sheriff's Office, PD&E 2030	NA	Safety Study
6	SR 4 @ Galliver Cut Off (Okaloosa) Intersection Improvements	200	Phase	2027	2028	2029	2030	2031	Traffic Signal Needed	NA	Signal Warrant
7	SR 87 N @ Country Mill Rd (Santa Rosa) Intersection Improvements	144	Phase	2027	2028	2029	2030	2031	Left and Right Turn Lanes on SR 87 N	NA	PE
8	US 90 @ SR 4 near Milligan (Okaloosa) Intersection Improvements	519	Phase	2027	2028	2029	2030	2031	High Crash Concentration	NA	Safety Study
9	SR 89 N @ CR 197/Chumuckla Hwy (Santa Rosa) Intersection Improvements	135	Phase	2027	2028	2029	2030	2031	Left and Right Turn Lanes on SR 89 N; FDOT WP Resurfacing Project 452944-1: SR 89 from CR 178 to SR 4, CST 2027	NA	PE
10	US 90 @ SR 81 (Holmes) Intersection Improvements	235	Phase	2027	2028	2029	2030	2031	Stop Light Needed; High Traffic/Crash Area	NA	Safety Study

PD&E - Project Development and Environment Study
PE - Preliminary Engineering (Design)

ROW - Right-of-Way
CST - Construction

SIS - Strategic Intermodal System (FDOT roadway designation)

FULLY FUNDED PROJECTS NOT YET CONSTRUCTED

Priority Rank	Project Name/Limits	GIS ID/ FDOT WPID	Programmed Funding					Project/Strategy/Notes	Length (miles)	Funding Sought
			Phase	2027	2028	2029	2030			
			Phase	2027	2028	2029	2030	2031		

DRAFT RRTP 2028-2032 Bike, Ped, Trails Project Priorities

Priority Rank	Project Name/Limits	GIS ID/ FDOT WPID	Programmed Funding					Project/Strategy/Notes	Length (miles)	Funding Sought	
			Phase	2027	2028	2029	2030				2031
1	US 90 (Washington) From: East End of Bridge To: Caryville City Limits	1	Phase	2027	2028	2029	2030	2031	Bike/Ped Improvements	1.8	TBD
2	US 90 (Okaloosa) From: Okaloosa County Line To: TPO Boundary	201 452971-1 452971-2	Phase 1-PDE 2- Design	2027	2028	2029	2030	2031	Multi-Use Path; FDOT WP Bike Path/Trail Project 452971-2: SR 10 from Cooper Ln to Holt Community Center, PE 2027, PDE anticipated approval Spring 2026; FDOT WP Resurfacing Project 454639-1: SR 10 (US 90) from Santa Rosa Line to Summertime Dr, PE 2026/CST 2028, PE contract expected Feb 2026	11	TBD
3	SR 4 (Okaloosa) From: SR 189 (Baker) To: US 90	202	Phase	2027	2028	2029	2030	2031	Multi-Use Path; PE 2026	4.6	TBD
4	CR 191 (Santa Rosa) From: SR 87 To: State Line	529	Phase	2027	2028	2029	2030	2031	Shared-Use Path	30	TBD
5	US 90 (Holmes/Washington) From: Holmes/Walton County Line To: Jackson County Line	504 455414-1	Phase	2027	2028	2029	2030	2031	Shared-Use Path SUN-Trail; FDOT WP-Resurfacing Project 457028-1: E of FG&A R/R Bridge to Choctawhatchee River Bridge, PE 2027/CST 2029; FDOT WP-Resurfacing Project 436269-2: SR 10 from Banfill Ave to Hubbard St, CST 2025 - construction underway, anticipated completion 12/2026 FDOT WP Bike Path/Trail Project 455414-1: US 90 from Banfill Ave to Holmes Sheriff's Office, PD&E 2030	37	TBD
6	SR 4 (Escambia, Santa Rosa, Okaloosa) From: US 29 (Century) To: SR 189	530	Phase	2027	2028	2029	2030	2031	Shared Use Path	39	TBD
7	Clear Springs Road (Walton) From: US 331 To: SR 85	217	Phase	2027	2028	2029	2030	2031	Bike/Ped Feasibility Study	2.4	TBD
8	Lake Jackson Multi-Use Path (Walton) From: County Line To: Lake Drive	120	Phase	2027	2028	2029	2030	2031	Multi-Use Trail	1	TA Grant (See TA Priorities)
9	Waits Ave/CR 279 (Washington) From: US 90 To: Caryville City Limits	2	Phase	2027	2028	2029	2030	2031	Sidewalks or Bike Paths	1	TBD
10	US 331 N (Walton) From: Paxton By-Pass To: Alabama State Line	125	Phase	2027	2028	2029	2030	2031	Bike/Ped Feasibility Study	2.8	TBD

PD&E - Project Development and Environment Study
PE - Preliminary Engineering (Design)

ROW - Right-of-Way
CST - Construction

SIS - Strategic Intermodal System (FDOT roadway designation)

FULLY FUNDED PROJECTS NOT YET CONSTRUCTED

			Phase	2027	2028	2029	2030	2031		

DRAFT RRTP 2028-2032 Park and Ride Project Priorities

Priority Rank	Project Name/Limits	GIS ID/ FDOT WPID	Programmed Funding					Project/Strategy/Notes	Length (miles)	Funding Sought	
			Phase	2027	2028	2029	2030				2031
1	Walton SR 83 Near Sunrise Road	527	Phase	2027	2028	2029	2030	2031	New Park & Ride Lot	NA	PE and CST
2	Walton US 331 Near King Lake Road	526	Phase	2027	2028	2029	2030	2031	New Park & Ride Lot	NA	PE and CST
3	Washington N. 4th Street @ Railroad Ave.	197	Phase	2027	2028	2029	2030	2031	New Park & Ride Lot	NA	PE and CST
			Phase	2027	2028	2029	2030	2031			
			Phase	2027	2028	2029	2030	2031			
			Phase	2027	2028	2029	2030	2031			
			Phase	2027	2028	2029	2030	2031			
			Phase	2027	2028	2029	2030	2031			
			Phase	2027	2028	2029	2030	2031			
			Phase	2027	2028	2029	2030	2031			

Note: Only 3 projects were identified

PD&E - Project Development and Environment Study
PE - Preliminary Engineering (Design)

ROW - Right-of-Way
CST - Construction

SIS - Strategic Intermodal System (FDOT roadway designation)

FULLY FUNDED PROJECTS NOT YET CONSTRUCTED

Priority Rank	Project Name/Limits	GIS ID/ FDOT WPID	Phase	2027	2028	2029	2030	2031	Project/Strategy/Notes	Length (miles)	Funding Sought

DRAFT RRTP 2028-2032 Freight Project Priorities

Priority Rank	Project Name/Limits	GIS ID/ FDOT WPID	Programmed Funding					Project/Strategy/Notes	Length (miles)	Funding Sought	
			Phase	2027	2028	2029	2030				2031
1	SR 4 (Santa Rosa) From: Escambia County Line To: Okaloosa Line	525	Phase	2027	2028	2029	2030	2031	Freight Study	29.1	Freight Study
2	US 29 near Pine Oak Lane (Escambia)	528	Phase	2027	2028	2029	2030	2031	Commercial Truck Parking	NA	PE
3	Escambia AL & Gulf Coast Rail	514	Phase	2027	2028	2029	2030	2031	Track and Tie Rehab	51.3	PE
4	Washington Washington County Industrial Park	311	Phase	2027	2028	2029	2030	2031	Rail Spur	0.4	PE
			Phase	2027	2028	2029	2030	2031			
			Phase	2027	2028	2029	2030	2031			
			Phase	2027	2028	2029	2030	2031			
			Phase	2027	2028	2029	2030	2031			
			Phase	2027	2028	2029	2030	2031			
			Phase	2027	2028	2029	2030	2031			

Note: Only 4 projects were identified

PD&E - Project Development and Environment Study
PE - Preliminary Engineering (Design)

ROW - Right-of-Way
CST - Construction

SIS - Strategic Intermodal System (FDOT roadway designation)

FULLY FUNDED PROJECTS NOT YET CONSTRUCTED

			Phase	2027	2028	2029	2030	2031		

DRAFT RRTP 2028-2032 TA Project Priorities

Priority Rank	Project Name/Limits	GIS ID/ FDOT WPID	Programmed Funding					Project/Strategy/Notes	Length (miles)	Funding Sought	
			Phase	2027	2028	2029	2030				2031
1	Lake Jackson Multi-Use Path Phase II (Walton County) Lake Drive From: SR 85 To: 0.5 mi east of Lake Rd	531	Phase	2027	2028	2029	2030	2031	Multi-Use Path	1	PE \$333,244
2	Complete Streets Master Plan (Century) US 29 From: CR 4 to Town Limits (State Line)	533	Phase	2027	2028	2029	2030	2031	Complete Streets Master Plan	5.5	Planning \$100,000
3	Westbourne Ave & West Blvd Sidewalk Project (Chipley) Westbourne Ave From: West Blvd To: Sinclair St West Blvd From: South Blvd To: W Jackson Ave	535	Phase	2027	2028	2029	2030	2031	Sidewalks	0.6	PE, CST, CEI, Other \$606,845
4	CR 181 Sidewalk Improvements (Holmes County) From: Fern Arnold Park To: CR 179A/Pine St	536	Phase	2027	2028	2029	2030	2031	Sidewalks	0.4	PE, CST, CEI \$570,103
5	Freedom Rd Safety Enhancement Project (Century) From: Highway 4 To: Jefferson Ave	534	Phase	2027	2028	2029	2030	2031	Sidewalks, Curb Ramps, Bike Lanes, Sharrows	0.6	PD&E, PE, CST, Other \$1,350,000
			Phase	2027	2028	2029	2030	2031			
			Phase	2027	2028	2029	2030	2031			
			Phase	2027	2028	2029	2030	2031			
			Phase	2027	2028	2029	2030	2031			

PD&E - Project Development and Environment Study
PE - Preliminary Engineering (Design)

ROW - Right-of-Way
CST - Construction

SIS - Strategic Intermodal System (FDOT roadway designation)
CEI - Construction, Engineering, and Inspection

FULLY FUNDED PROJECTS NOT YET CONSTRUCTED

			Phase	2027	2028	2029	2030	2031			



U.S. 90 SHARED-USE TRAIL PD&E STUDY

From Cooper Lane to the Future Holt Community Center

Financial Project Identification Number: 452971-1-22-01

PROJECT GOALS



Improve Bicycle and Pedestrian Safety



Enhance Trail Connectivity



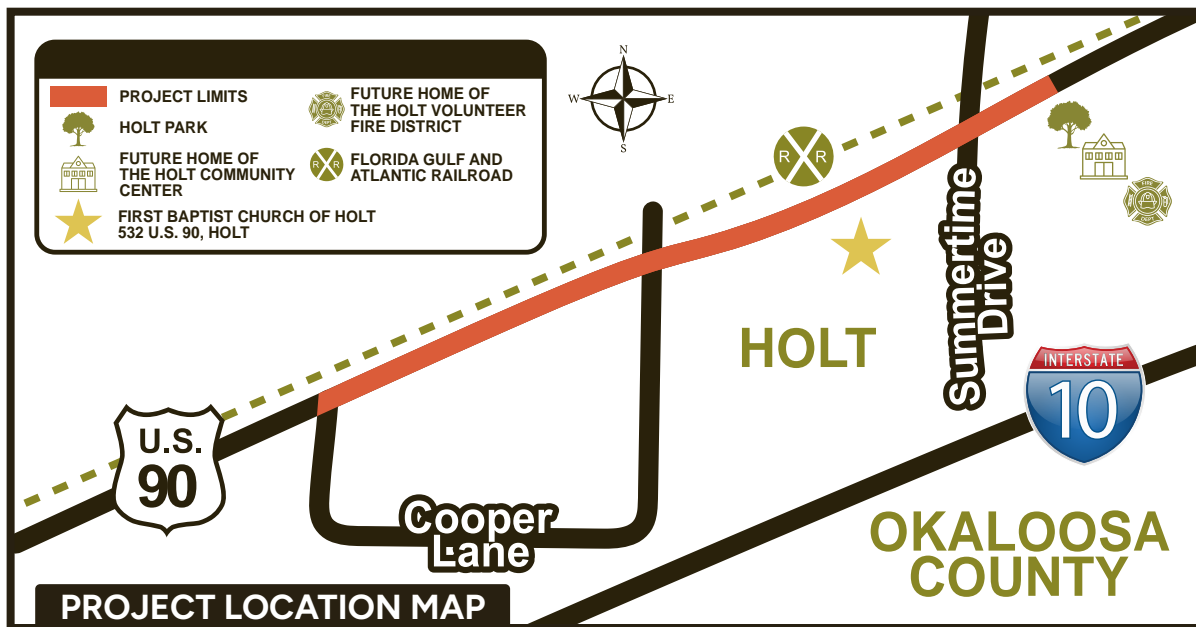
Increase Mobility and Recreation



Promote Economic Development



Scan me ↑



HYBRID PUBLIC MEETING TUESDAY, FEBRUARY 3, 2026

First Baptist Church of Holt | 5:30 - 6:30 p.m. (CST)
532 U.S. 90, Holt

The Florida Department of Transportation (FDOT) will hold a hybrid public meeting concerning the U.S. 90 Shared-Use Trail Project Development and Environment (PD&E) Study. This meeting is being held both virtually and in-person to provide interested persons an opportunity to express their views concerning the proposed improvements. Citizens are encouraged to attend the meeting online at www.nwflroads.com/calendar. Those who are unable to participate virtually may attend the meeting in-person. **Pre-registration is required for the virtual format and encouraged for in-person attendees.** See the information sheet in this handout for details.

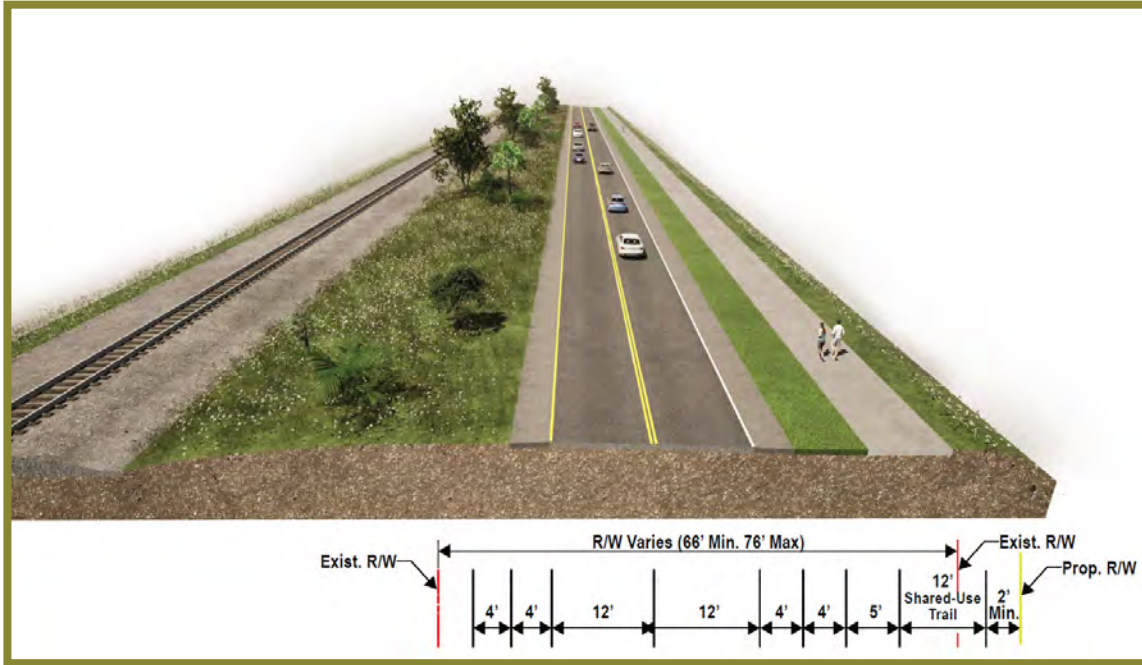
Maps, drawings, and other information is available for review online beginning at 12 p.m. (CST), Tuesday, Jan. 6, 2026, at www.nwflroads.com/calendar. Project materials will also be available at the in-person meeting. The materials may also be viewed by contacting the FDOT Project Manager.



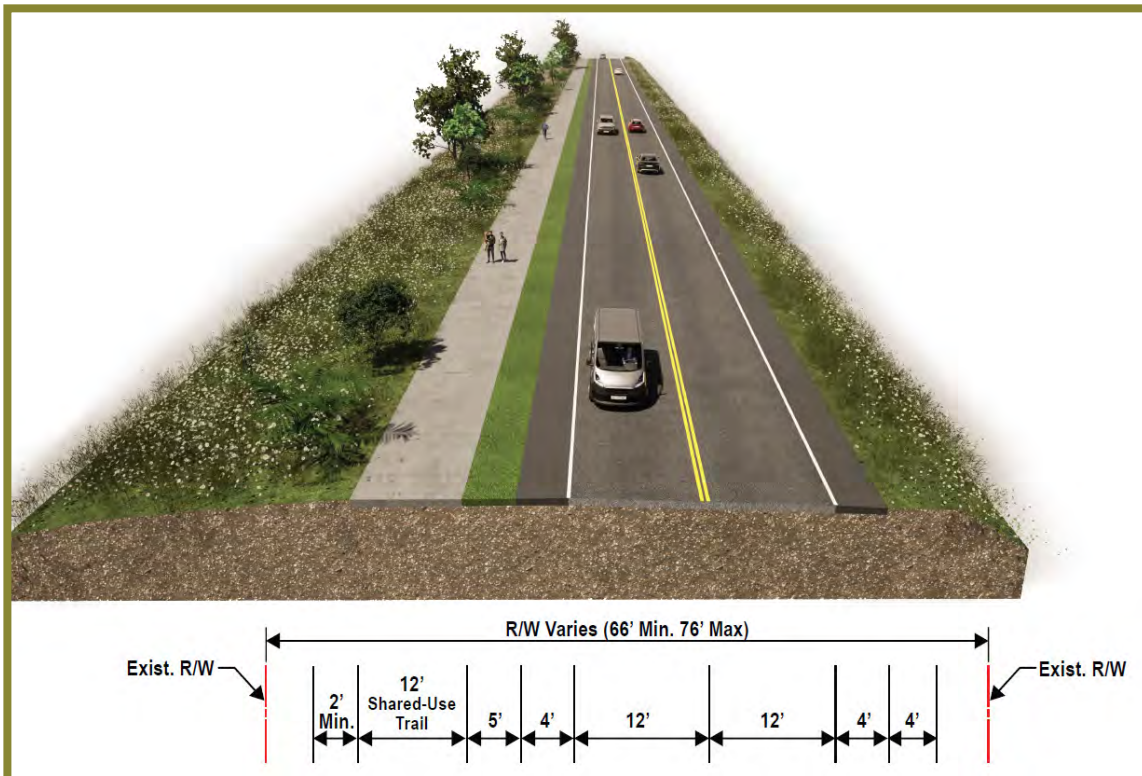
WHAT IS A PD&E STUDY? A PD&E Study is the formal process that develops and compares alternatives to determine a preferred action that meets project goals, while minimizing impacts to the social, natural, cultural, and physical environments. Engaging the public by sharing and receiving information is a key component of this process and is required by the National Environmental Policy Act.



PROPOSED IMPROVEMENTS FDOT has evaluated alternatives to add a shared-use trail along U.S. 90. The alternatives were presented to the public for review and comment during the Virtual Project Update held on Tuesday, Feb. 4, 2025, at www.nwflroads.com. Based on public input and the results of the environmental and engineering analysis conducted, FDOT is recommending the preferred alternative be advanced to the design phase. These proposed improvements include adding a shared-use trail along U.S. 90 from Cooper Lane to the future Holt Community Center in Okaloosa County. Design is funded. Right of way and construction are not funded at this time. The proposed typical sections, which are visual representations of the basic configuration of the proposed shared-use trail, are provided below.



Alternative 1: U.S. 90 from Cooper Lane to the future Holt Community Center



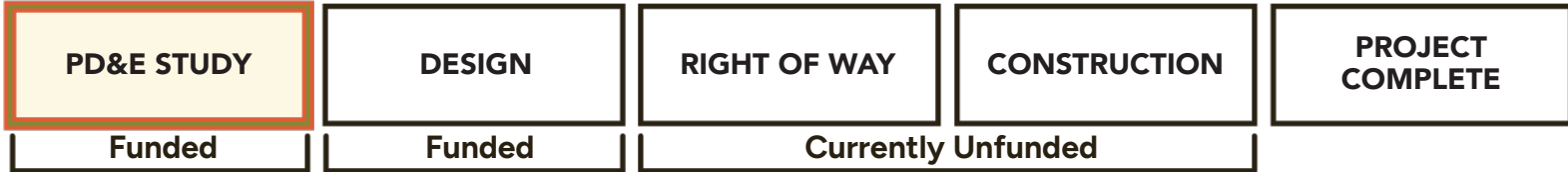
Alternative 2 (Preferred): U.S. 90 from Cooper Lane to the future Holt Community Center

PROJECT IMPACTS

PROJECT GOALS	No-Build	Alternative 1 South Option	Alternative 2 North Option (Preferred)
Addresses Bicycle and Pedestrian Safety	No	Yes	Yes
Enhances Roadway Safety	No	Yes	Yes
SOCIAL AND ECONOMIC EFFECTS			
Number of Business Relocations	0	0	0
Number of Residential Relocations	0	1	0
Number of Affected Parcels	0	37	35
Area of Right of Way Anticipated to be Acquired	0	1.07 Acres	1.03 Acres
CULTURAL RESOURCE EFFECTS			
Number of Archaeological / Historical Sites	0	0	0
Number of Section 4(f) Sites	0	1	1
NATURAL RESOURCE EFFECTS			
Number of Wetlands	0	0	0
Number of Protected Species Involvement	0	0	0
PHYSICAL RESOURCE EFFECTS			
Number of Potential Noise Impacts	0	0	0
Number of Petroleum and Hazardous Sites	0	3	3
COST ESTIMATE (\$ MILLIONS)			
Utility (Estimate from CenturyLink Local)	\$0.00	\$0.24	\$0.24
Design (15% of Construction)	\$0.00	\$0.71	\$0.48
Right of Way	\$0.00	\$3.48	\$2.51
Construction	\$0.00	\$4.75	\$3.22
Construction Engineering and Inspection	\$0.00	\$0.95	\$0.64
Total Preliminary Costs	\$0.00	\$10.13	\$7.10

TRANSPORTATION DEVELOPMENT PROCESS & PROJECT SCHEDULE

WE ARE HERE



WE ARE HERE

SUN TRAIL PROGRAM



This PD&E Study is part of the Shared-Use Non-motorized (SUN) Trail Program. Please visit www.floridasuntrail.com to learn more about the SUN Trail network and its existing and conceptual trails.

THERE ARE MANY WAYS TO PROVIDE COMMENTS

VIRTUAL ATTENDANCE (ONLINE)



- Enter your comments in the chat box during the public meeting.
- Submit any comments or questions to the FDOT Project Manager via email or by mail by Friday, Feb. 13, 2026.

IN-PERSON ATTENDANCE



- Complete a comment form and drop it in the comment box.
- Provide comments or questions during the public meeting to the project team.
- Provide comments or questions to the FDOT Project Manager via email or by mail by Friday, Feb. 13, 2026.

WHAT'S NEXT?

Your comments are very important to us. A final decision on the preferred alternative will not be made until all comments received by the designated date have been reviewed. FDOT will consider and respond to each comment and is anticipated to make a decision by mid-2026. The decision will be announced via the project webpage on www.nwflroads.com.



CONTACT INFORMATION All comments provided, or postmarked, on or before Friday, Feb. 13, 2026, will become part of the official project record.

TAYLOR SELLERS FDOT PROJECT MANAGER

(888) 638-0250, EXT. 1517
TAYLOR.SELLERS@DOT.STATE.FL.US

IAN SATTER FDOT DISTRICT THREE PUBLIC INFORMATION DIRECTOR

(888) 638-0250, EXT. 1205
IAN.SATTER@DOT.STATE.FL.US

1074 HIGHWAY 90, CHIPLEY, FL 32428

Additional Project Information:



WWW.NWFLROADS.COM

Stay Connected:



MYFDOTNWFL



@MYFDOT_NWFL



@MYFDOT_NWFL



@MYFDOTNWFL

Public participation is solicited without regard to race, color, national origin, age, sex, religion, disability, or family status. Persons wishing to express their concerns about Title VI may do so by contacting Derek Chadwell, FDOT District Three Title VI Coordinator, 1074 Highway 90, Chipley, FL 32428, toll-free at (888) 638-0250, ext. 1507, or via email at derek.chadwell@dot.state.fl.us. Persons who require special accommodations under the Americans with Disabilities Act or persons who require translation services (free of charge) should contact the FDOT Project Manager, at the information listed above, at least seven days prior to the meeting.

The environmental review, consultation, and other actions required by applicable federal environmental laws for this project are being, or have been, carried out by FDOT pursuant to 23 U.S.C. § 327 and a Memorandum of Understanding dated May 26, 2022, and executed by the Federal Highway Administration and FDOT.





U.S. 90 SHARED-USE TRAIL PD&E STUDY

From Cooper Lane to the Future Holt Community Center
Financial Project Identification Number: 452971-1-22-01

Instructions for Attending the Hybrid Public Meeting Tuesday, February 3, 2026

Registration is required for the virtual format and encouraged for in-person attendees. Interested persons can visit the project website at www.nwflroads.com/calendar and register for one viewing option (virtual or in-person). The same materials will be presented for each format. If you have any questions or issues registering, please contact Taylor Sellers, FDOT Project Manager, at (888) 638-0250, ext. 1517.

To register, visit:
www.nwflroads.com/calendar
or contact Taylor Sellers,
FDOT Project Manager, at
(888) 638-0250, ext. 1517.



To attend the Virtual Public Meeting



**The Virtual Public Meeting will be held through
GoToWebinar**

5:30 - 6:30 p.m. (CST)

Persons registered for the Virtual Public Meeting can attend online using GoToWebinar.

1. Virtual attendees should use the sign-in link emailed to them after registering.
2. During the meeting, attendees will have an opportunity to provide input and ask questions to project team members by entering comments in the designated chat box.
3. The GoToWebinar presentation will be broadcast to virtual attendees.
4. Public comments may be submitted by any of the methods mentioned in the project handout. All comments provided or postmarked on or before Friday, Feb. 13, 2026, will become part of the official project record.

To attend the In-Person Public Meeting



**The In-Person Public Meeting will be held at:
First Baptist Church of Holt
532 U.S. 90, Holt**

5:30 - 6:30 p.m. (CST)

Persons registered for the In-Person Public Meeting can attend at the designated public viewing location.

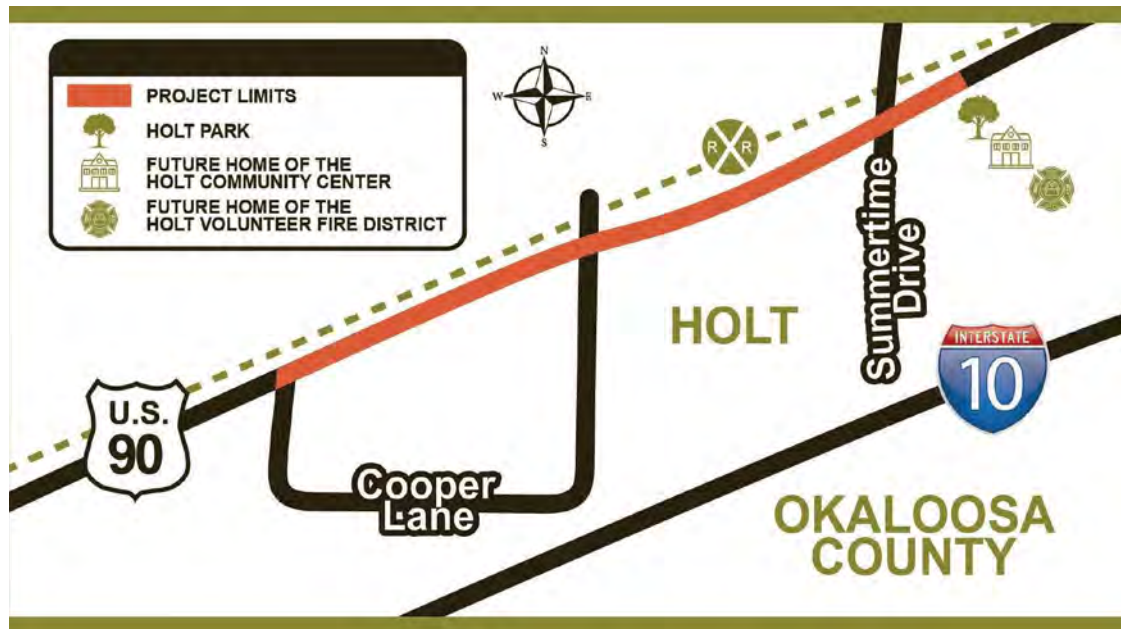
1. Upon arrival, please sign-in.
2. Project displays will be available for review. Project team members will be on-site to assist with questions and/or concerns.
3. Public comments may be turned in during the meeting or until Friday, Feb. 13, 2026, via the methods presented in the project handout. All comments provided or postmarked on or before Friday, Feb. 13, 2026, will become part of the official project record.



PROJECT DEVELOPMENT & ENVIRONMENT STUDY

S.R. 10 (U.S. 90) Shared-Use Path
 from Cooper Lane to Holt Community Center Driveway
 FPID: 452971-1

LOCATION MAP



FDOT PM
 Taylor Sellers
 850-330-1517

CONSULTANT PM
 Michael Baker Intl.
 Charles Blead
 863-838-6806

SUBCONSULTANTS
 DRMP
 Carpe Diem
 Community Solutions
 Tierra
 Southeastern Survey
 IF Rooks
 Environmental Science
 Associates
 SEARCH

PROJECT LIMITS
 S.R. 10 (U.S. 90) from
 Cooper Lane to Holt
 Community Center
 Driveway –
 2.4 Miles

COUNTY
 Okaloosa County

TPO PRIORITY
 SUN Trail funded
 Not a TPO priority

CONTRACT
 CAS28
 NTP: 03/20/2024
 EXPIRE: 10/20/2026

ETDM Number
 14586

COA
 Type I CE

PHASE
 PD&E
 Phase IV (100%)

LDCA
 May 2026

FUNDING

FPID	PD&E	DESIGN	R/W	CONST	CEI
452971-1 S.R. 10 (U.S. 90) Multi-Use Path from Cooper Lane to Holt Community Center Driveway	Underway \$1.4M				
452971-2 S.R. 10 (U.S. 90) Multi-Use Path from Cooper Lane to Holt Community Center Driveway		FY 27 \$1.8M	Unfunded \$2.5M	Unfunded \$4.5M	Unfunded \$589K

PUBLIC MEETINGS

- ✓ [Kickoff Newsletter](#) August 29, 2024
- ✓ [Virtual Project Update](#) February 4, 2025
- ✓ [Public Meeting](#) February 3, 2026

MAJOR PURPOSE

This Project Development and Environment (PD&E) Study is to consider a Shared-Use Trail along S.R. 10 (U.S. 90) in Okaloosa County through the town of Holt. This project will run approximately 2.46 miles and begin at Cooper Lane to the west of Holt, ending at the future home of the Holt Community Center east of Holt.

UPDATED APRIL 2026



PROJECT DEVELOPMENT & ENVIRONMENT STUDY

S.R. 10 (U.S. 90) Shared-Use Path
from Cooper Lane to Holt Community Center Driveway
FPID: 452971-1

CONSIDERATIONS

Y / N / TBD FOR IMPACTS

- Y **Context Classification:** C2 & C3R
- Y **Access Classification:** Class 6 Minor Arterial Rural
- N **Bridges:** None
- Y/N **Right of way # of parcels:** 35
- N **Notable Utilities or Railroad:** None
- Y **Significant Stakeholder:** Okaloosa County and Community of Holt
- N **Interchange:** None
- N **Roundabouts (# & Location):** None
- N **Noise walls or retaining walls:** None
- N **Species protection/avoidance measures:** None
- N **Wetland Impact (acreage):** None
- Y/N **4f or 106 Sites:** None
- N **Pedestrian Bridges:** None
- N **Other project-specific elements:** None

TYPICAL SECTIONS



(Preliminary Typical)

FDOT PM
Taylor Sellers
850-330-1517

CONSULTANT PM
Michael Baker Intl.
Charles Bleam
863-838-6806

SUBCONSULTANTS
DRMP
Carpe Diem
Community Solutions
Tierra
Southeastern Survey
IF Rooks
Environmental Science
Associates
SEARCH

PROJECT LIMITS
S.R. 10 (U.S. 90) from
Cooper Lane to Holt
Community Center
Driveway –
2.4 Miles

COUNTY
Okaloosa County

TPO PRIORITY
SUN Trail funded
Not a TPO priority

CONTRACT
CAS28
NTP: 03/20/2024
EXPIRE: 10/20/2026

ETDM Number
14586

COA
Type I CE

PHASE
PD&E
Phase IV (100%)

LDCA
May 2026

UPDATED APRIL 2026



STATE ROAD (S.R.) 10 (U.S. 90) TRAIL PROJECT DEVELOPMENT & ENVIRONMENT (PD&E) STUDY



U.S. 90 FROM WOODYARD ROAD TO BALDWIN AVENUE AND
BALDWIN AVENUE FROM U.S. 90 WEST TO U.S. 90 EAST
FINANCIAL PROJECT IDENTIFICATION NUMBERS: 452969-1-22-01 & 452969-2-22-01
WALTON COUNTY



VIRTUAL PROJECT UPDATE

PROJECT INFORMATION CAN BE ACCESSED BEGINNING 12 P.M. (CDT),
TUESDAY, JUNE 10, 2025.

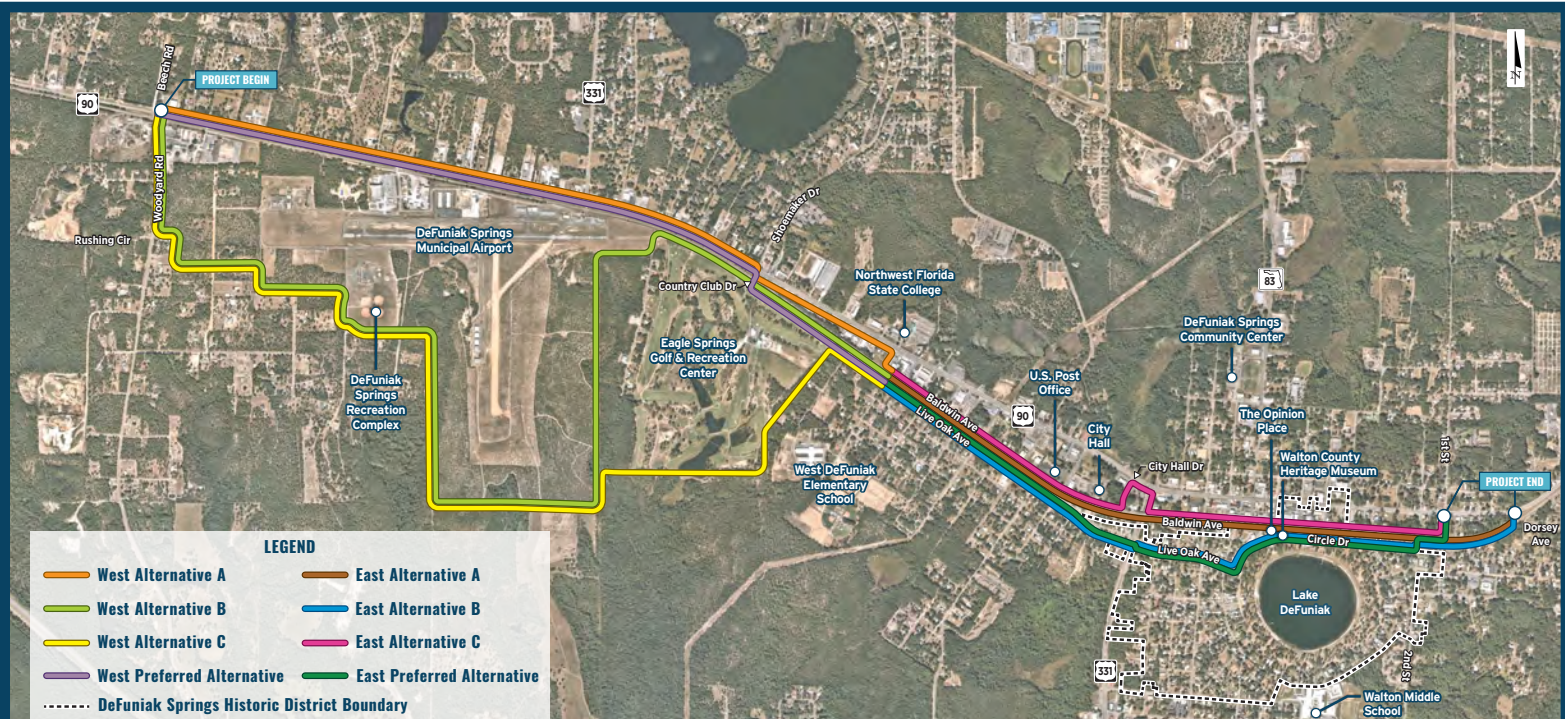
MAPS, DRAWINGS, AND OTHER INFORMATION WILL BE AVAILABLE AT:
WWW.NWFLROADS.COM/CALENDAR



↑ SCAN ME

The Florida Department of Transportation (FDOT) is conducting a Project Development and Environment (PD&E) Study to evaluate concepts for a shared-use trail and assess environmental impacts associated with the addition of a shared-use trail along U.S. 90 from Woodyard Road to Baldwin Avenue, and along Baldwin Avenue from U.S. 90 West to U.S. 90 East in Walton County. Various alternatives, including an alternative to the Baldwin Avenue segment would route the trail along Live Oak Avenue to Circle Drive, then continue along Baldwin Avenue to U.S. 90 East. The total distance of this study is 4.4 miles.

The intent of this study is to evaluate a segment of the Florida Shared-Use Non-motorized (SUN) Trail corridor extending from Pensacola to Jacksonville and provide connectivity to support a wide range of non-motorized modes of transportation for all users.





STATE ROAD (S.R.) 10 (U.S. 90) TRAIL PROJECT DEVELOPMENT & ENVIRONMENT (PD&E) STUDY



U.S. 90 FROM WOODYARD ROAD TO BALDWIN AVENUE AND
BALDWIN AVENUE FROM U.S. 90 WEST TO U.S. 90 EAST
FINANCIAL PROJECT IDENTIFICATION NUMBERS: 452969-1-22-01 & 452969-2-22-01
WALTON COUNTY



EVALUATION CRITERIA - WEST ALTERNATIVES

PURPOSE & NEED

	No Build Alternative	West Alternative A	West Alternative B	West Alternative C	West Preferred Alternative
Enhance Community Mobility and Connectivity	No	Yes	Yes	Yes	Yes
Enhance Pedestrian and Bicyclist Safety	No	Yes	Yes	Yes	Yes

PROJECT LENGTH

	No Build Alternative	West Alternative A	West Alternative B	West Alternative C	West Preferred Alternative
Trail Segment Length (miles)	0	2.46	4.16	3.65	2.41
Variance from Shortest Option (%)	N/A	2.07%	72.61%	51.45%	0%
Percentage of Trail Adjacent to Roadway	N/A	100%	20.29%	15.38%	84.79%

TRAVEL SERVICE / ACCESSIBILITY / SAFETY CHARACTERISTICS

	No Build Alternative	West Alternative A	West Alternative B	West Alternative C	West Preferred Alternative
Number of Street Crossings	0	14	6	4	14
Number of Driveway Crossings	0	62	4	3	43
Number of Community Features Served by Trail	0	4	4	4	4

POTENTIAL ENVIRONMENTAL IMPACTS

	No Build Alternative	West Alternative A	West Alternative B	West Alternative C	West Preferred Alternative
Potential Wildlife/State Protected Species Impacts (Low/Moderate/High)	None	Low	Moderate	Moderate	Low
Potential Wetlands Impacts (Low/Moderate/High)	None	None	Moderate	Moderate	None
Potential Floodplains Impacts (Low/Moderate/High)	None	Low	Moderate	Moderate	Low
Potential Contamination Sites Impacts (Low/Moderate/High)	None	Moderate	Moderate	Low	Moderate
Potential Geotech Impacts (Low/Moderate/High)	None	Low	Moderate	Moderate	Low
Potential Archaeological and Historical Impacts (Low/Moderate/High)	None	Low	Low	Low	Low
Potential Section 4(f) Involvement (Low/Moderate/High)	None	None	Moderate	Moderate	Low
Potential Farmland Impacts (Low/Moderate/High)	None	None	Low	Low	Low

POTENTIAL COMMUNITY IMPACTS

	No Build Alternative	West Alternative A	West Alternative B	West Alternative C	West Preferred Alternative
Total Parcels from which Right of Way is Required for the Trail (#)	0	18	11	11	6
Publicly Owned Parcels from which Right of Way is Required for the Trail (#)	0	0	11	11	2
Privately Owned Parcels from which Right of Way is Required for the Trail (#)	0	18	0	0	4
Total Right of Way Required for the Trail (acres)	0	1.05	13.17	12.02	1.24
Publicly Owned Right of Way Required for the Trail (acres)	0	0	13.17	12.02	1.14
Privately Owned Right of Way Required for the Trail (acres)	0	0.96	0	0	0.05
Railroad Owned Right of Way Required for the Trail (acres)	0	0.09	0.05	0.05	0.05
Potential Relocations (Anticipated Residential/Business Displacements) (#)	0	4	0	0	0
Potential Utility Impacts (Low/Moderate/High)	None	High	Low	Low	Moderate
Potential Drainage Impacts (Low/Moderate/High)	None	High	Moderate	Moderate	Moderate
Potential On-Street Parking Impacts (Reduction in Parking Spaces)	0	61	9	9	0

ESTIMATED PROJECT COST (\$ MILLION)

	No Build Alternative	West Alternative A	West Alternative B	West Alternative C	West Preferred Alternative
Estimated Design Cost	\$0	\$0.76	\$1.19	\$1.34	\$0.70
Estimated Right of Way Cost (\$, \$\$, \$\$\$)	\$0	\$\$	\$	\$	\$
Estimated Construction Cost	\$0	\$5.08	\$7.94	\$8.95	\$5.05
Estimated Total Cost	\$0	\$5.84	\$9.13	\$10.29	\$5.75





STATE ROAD (S.R.) 10 (U.S. 90) TRAIL PROJECT DEVELOPMENT & ENVIRONMENT (PD&E) STUDY



U.S. 90 FROM WOODYARD ROAD TO BALDWIN AVENUE AND
BALDWIN AVENUE FROM U.S. 90 WEST TO U.S. 90 EAST
FINANCIAL PROJECT IDENTIFICATION NUMBERS: 452969-1-22-01 & 452969-2-22-01
WALTON COUNTY



EVALUATION CRITERIA - EAST ALTERNATIVES

PURPOSE & NEED

	No Build Alternative	East Alternative A	East Alternative B	East Alternative C	East Preferred Alternative
Enhance Community Mobility and Connectivity	No	Yes	Yes	Yes	Yes
Enhance Pedestrian and Bicyclist Safety	No	Yes	Yes	Yes	Yes

PROJECT LENGTH

	No Build Alternative	East Alternative A	East Alternative B	East Alternative C	East Preferred Alternative
Trail Segment Length (miles)	0	2	2.14	2	1.97
Variance from Shortest Option (%)	N/A	1.52%	8.63%	1.52%	0.00%
Percentage of Trail Adjacent to Roadway	N/A	100%	100%	96.78%	100%

TRAVEL SERVICE / ACCESSIBILITY / SAFETY CHARACTERISTICS

	No Build Alternative	East Alternative A	East Alternative B	East Alternative C	East Preferred Alternative
Number of Street Crossings	0	11	18	13	19
Number of Driveway Crossings	0	4	25	3	18
Number of Community Features Served by Trail	0	15	17	16	18

POTENTIAL ENVIRONMENTAL IMPACTS

	No Build Alternative	East Alternative A	East Alternative B	East Alternative C	East Preferred Alternative
Potential Wildlife/State Protected Species Impacts (Low/Moderate/High)	None	Low	Low	Low	Low
Potential Wetlands Impacts (Low/Moderate/High)	None	None	None	None	None
Potential Floodplains Impacts (Low/Moderate/High)	None	Low	Low	Low	Low
Potential Contamination Sites Impacts (Low/Moderate/High)	None	Moderate	Moderate	Moderate	Moderate
Potential Geotech Impacts (Low/Moderate/High)	None	Low	Low	Low	Low
Potential Archaeological and Historical Impacts (Low/Moderate/High)	None	Moderate	Moderate	Moderate	Moderate
Potential Section 4(f) Involvement (Low/Moderate/High)	None	Moderate	Moderate	Moderate	Moderate
Potential Farmland Impacts (Low/Moderate/High)	None	None	None	None	None

POTENTIAL COMMUNITY IMPACTS

	No Build Alternative	East Alternative A	East Alternative B	East Alternative C	East Preferred Alternative
Total Parcels from which Right of Way is Required for the Trail (#)	0	14	17	2	3
Publicly Owned Parcels from which Right of Way is Required for the Trail (#)	0	0	0	1	0
Privately Owned Parcels from which Right of Way is Required for the Trail (#)	0	14	17	1	3
Total Right of Way Required for the Trail (acres)	0	5.09	0.38	4.86	0.09
Publicly Owned Right of Way Required for the Trail (acres)	0	0	0	0.24	0
Privately Owned Right of Way Required for the Trail (acres)	0	0.28	0.33	0	0.04
Railroad Owned Right of Way Required for the Trail (acres)	0	4.81	0.05	4.62	0.05
Potential Relocations (Anticipated Residential/Business Displacements) (#)	0	3	3	0	0
Potential Utility Impacts (Low/Moderate/High)	None	High	Moderate	High	Moderate
Potential Drainage Impacts (Low/Moderate/High)	None	High	Moderate	High	Moderate
Potential On-Street Parking Impacts (Reduction in Parking Spaces)	0	104	31	112	32
Potential Bridge Impacts	None	Yes	No	No	No

ESTIMATED PROJECT COST (\$ MILLION)

	No Build Alternative	East Alternative A	East Alternative B	East Alternative C	East Preferred Alternative
Estimated Design Cost	\$0	\$1.05	\$1.14	\$1.08	\$0.85
Estimated Right of Way Cost (\$, \$\$, \$\$\$)	\$0	\$\$	\$\$	\$	\$
Estimated Construction Cost	\$0	\$7.00	\$7.61	\$7.22	\$6.11
Estimated Total Cost	\$0.00	\$8.05	\$8.75	\$8.30	\$6.96



WHAT IS A PD&E STUDY?

A PD&E Study is the formal process that develops and compares alternatives to determine a preferred action that meets project goals, while minimizing impacts to the social, natural, cultural, and physical environments. Engaging the public by sharing and receiving information is a key component of this process and is required by the National Environmental Policy Act.

PROJECT GOALS



IMPROVE BICYCLE AND PEDESTRIAN SAFETY



ENHANCE TRAIL CONNECTIVITY



PROVIDE ADDITIONAL RECREATIONAL BENEFITS



PROMOTE ECONOMIC DEVELOPMENT

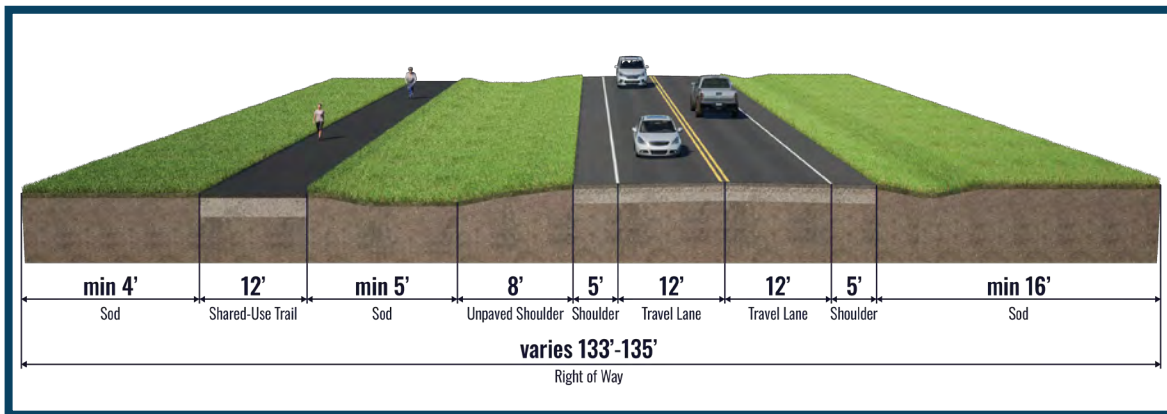


SUN TRAIL PROGRAM

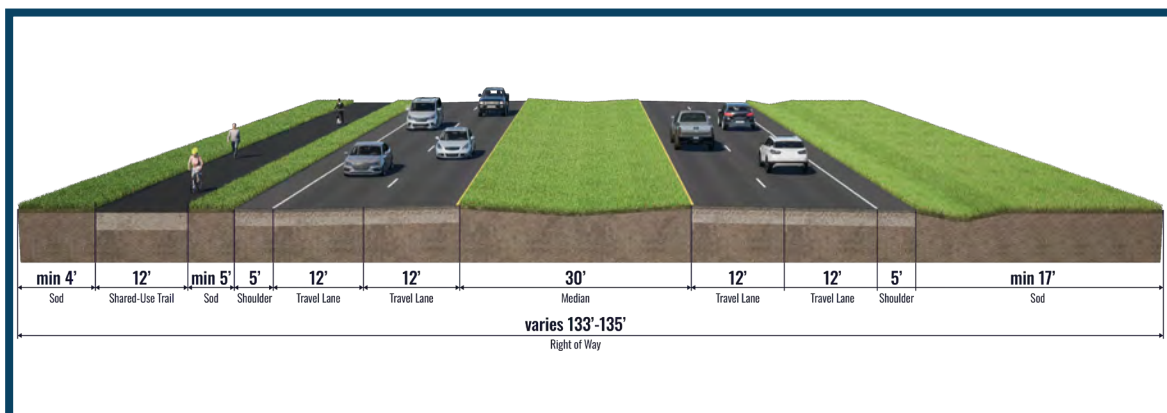
This PD&E Study is part of the Shared-Use Non-motorized (SUN) Trail Program. Please visit www.floridasuntrail.com to learn more about the SUN Trail network and its existing and conceptual trails.

PROPOSED IMPROVEMENTS

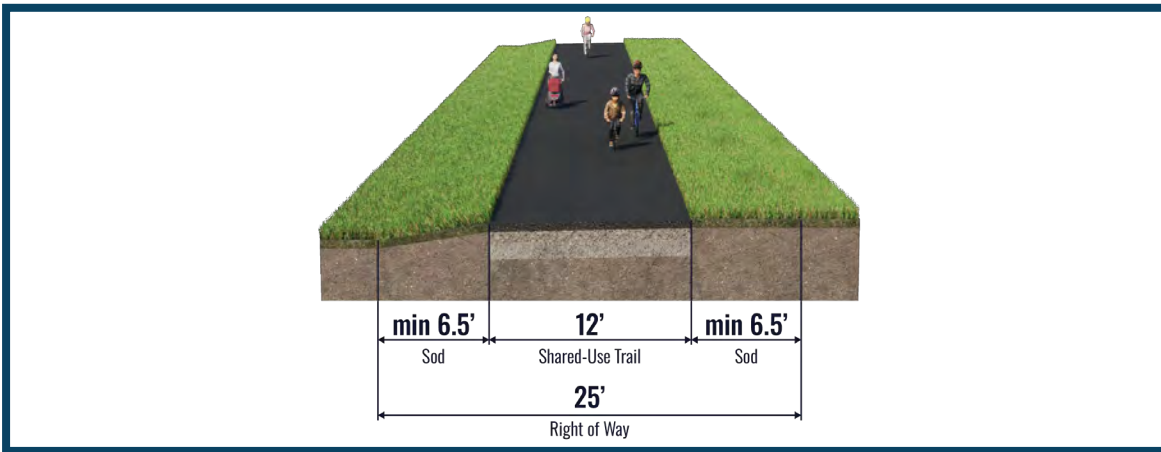
Public input will be sought and considered throughout this process and the proposed improvements will be evaluated against the no-build alternative.



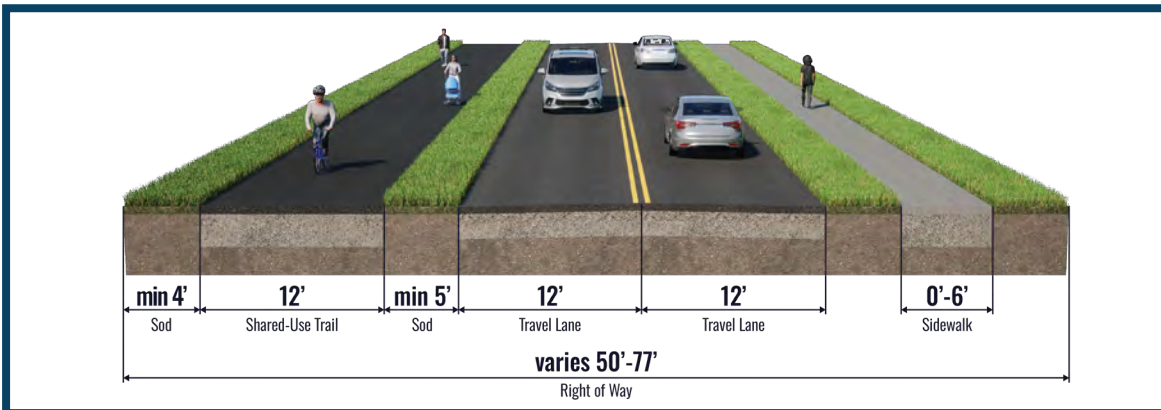
West Preferred Alternative: U.S. 90 from Woodyard Road to U.S. 331 North



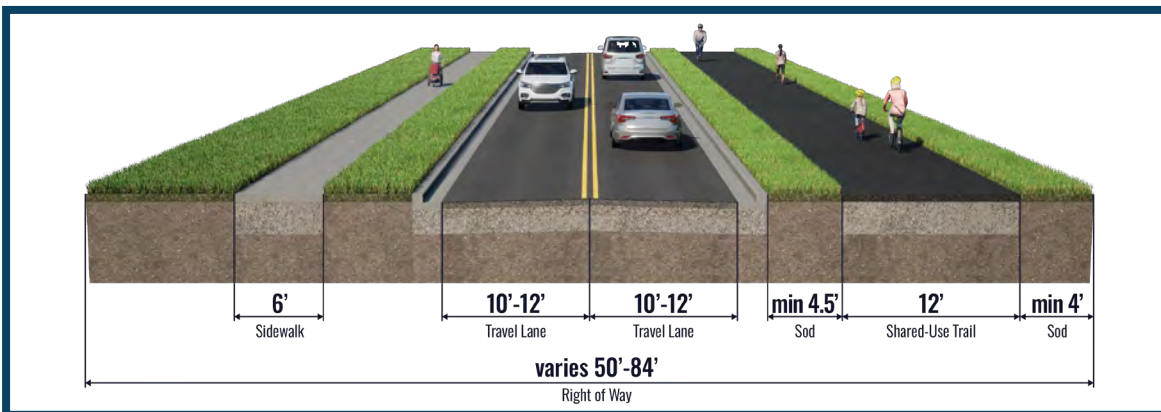
West Preferred Alternative: U.S. 90 from U.S. 331 North to Country Club Drive



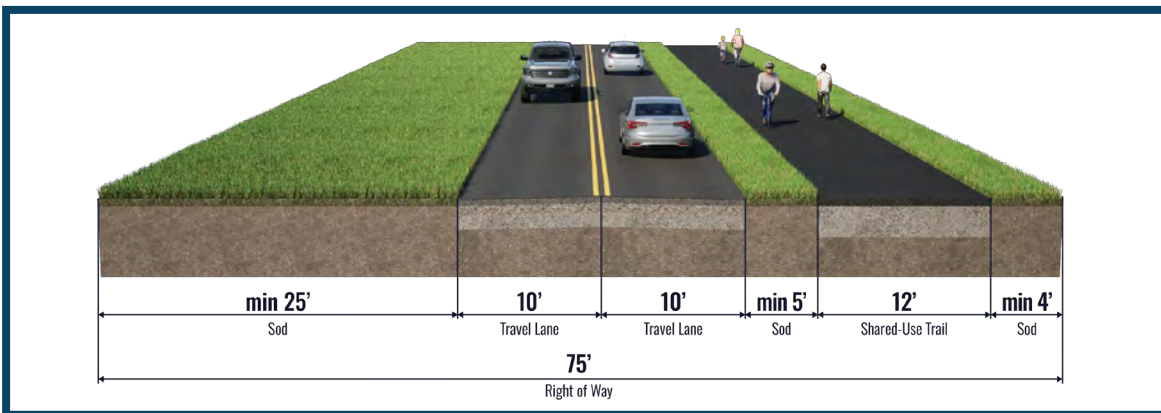
West Preferred Alternative: Off-road from Country Club Drive to 26th Street



East Preferred Alternative: Live Oak Avenue from 26th Street to U.S. 331 South and 2nd Street from Circle Drive to Baldwin Avenue and Baldwin Avenue from 2nd Street to 1st Street

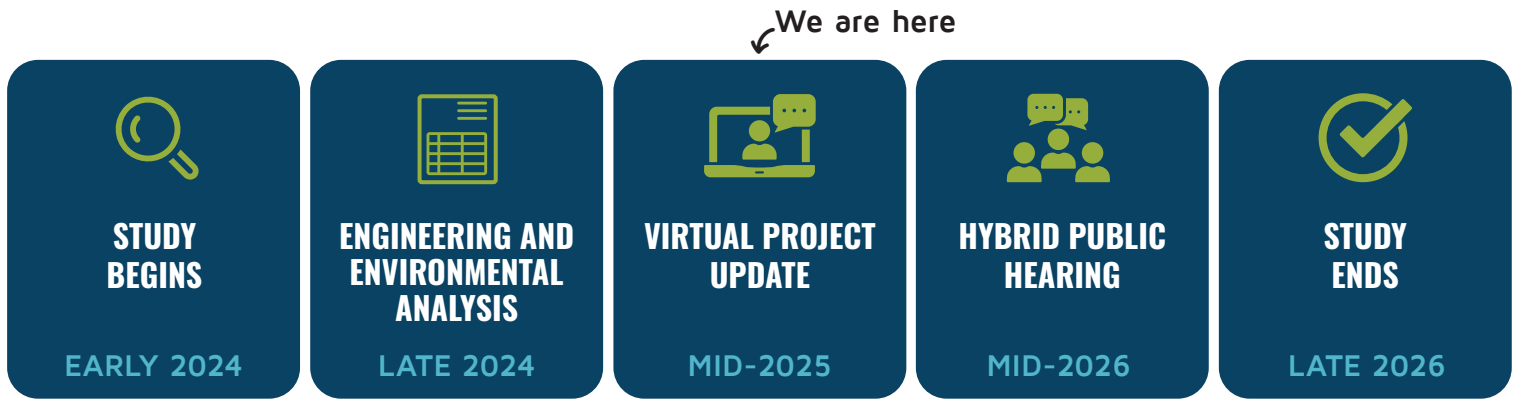


East Preferred Alternative: Live Oak Avenue from U.S. 331 South to Circle Drive and Circle Drive from Live Oak Avenue to 2nd Street



East Preferred Alternative: 1st Street from Baldwin Avenue to U.S. 90

PROJECT SCHEDULE



TRANSPORTATION DEVELOPMENT PROCESS



GET INVOLVED

Send us your comments and ideas regarding the proposed improvements. There are multiple ways to get involved – call, write, or email. All comments provided, or postmarked, on or before Thursday, July 10, 2025, will become part of the official project record.

CONTACT INFORMATION

TORI WHITE

FDOT PROJECT MANAGER
PHONE: TOLL-FREE (888) 638-0250, EXT. 1455
EMAIL: TORI.WHITE@DOT.STATE.FL.US

IAN SATTER

FDOT DISTRICT THREE PUBLIC INFORMATION DIRECTOR
PHONE: TOLL-FREE (888) 638-0250, EXT. 1205
EMAIL: IAN.SATTER@DOT.STATE.FL.US

1074 HIGHWAY 90, CHIPLEY, FL 32428

 WWW.NWFLROADS.COM

 [MYFDOTNWFL](https://www.facebook.com/MYFDOTNWFL)

 [@MYFDOT_NWFL](https://twitter.com/MYFDOT_NWFL)

 [@MYFDOT_NWFL](https://www.instagram.com/MYFDOT_NWFL)

 [@MYFDOTNWFL](https://www.youtube.com/MYFDOTNWFL)

Public participation is solicited without regard to race, color, national origin, age, sex, religion, disability, or family status. Persons wishing to express their concerns about Title VI may do so by contacting Alicia Bringer, FDOT District Three Title VI Coordinator, 1074 Highway 90, Chipley, FL 32428, toll-free at (888) 638-0250, ext. 1502, or via email at alicia.bringer@dot.state.fl.us.

The environmental review, consultation, and other actions required by applicable federal environmental laws for this project are being, or have been, carried out by FDOT pursuant to 23 U.S.C. § 327 and a Memorandum of Understanding dated May 26, 2022, and executed by the Federal Highway Administration and FDOT.





PROJECT DEVELOPMENT & ENVIRONMENT STUDY

S.R. 10 (U.S. 90) Multi-Use Path from Woodyard Road to Baldwin Avenue
 Baldwin Avenue from U.S. 90 West to U.S. 90 East
 FPID: 452969-1 & 452969-2

FDOT PM

Tori White
 850-330-1455

CONSULTANT PM

VHB
 Kevin Freeman
 407-965-0500

SUBCONSULTANTS

Metric
 Carpe Diem
 Community Solutions
 Tierra
 Southeastern Surveying
 & Mapping
 Snelgrove Survey
 IF Roofs
 SEARCH

PROJECT LIMITS

S.R. 10 (U.S. 90) from
 Woodyard Road to
 Baldwin Avenue;
 Baldwin Avenue from
 U.S. 90 West to U.S. 90
 East – 4.3 Miles

COUNTY

Walton County

TPO PRIORITY

SUN Trail funded
 Priority #17

CONTRACT

CAT14
 NTP: 05/31/2024
 EXPIRE: 05/31/2026

ETDM Number

14584

Anticipated COA

Type 2 CE

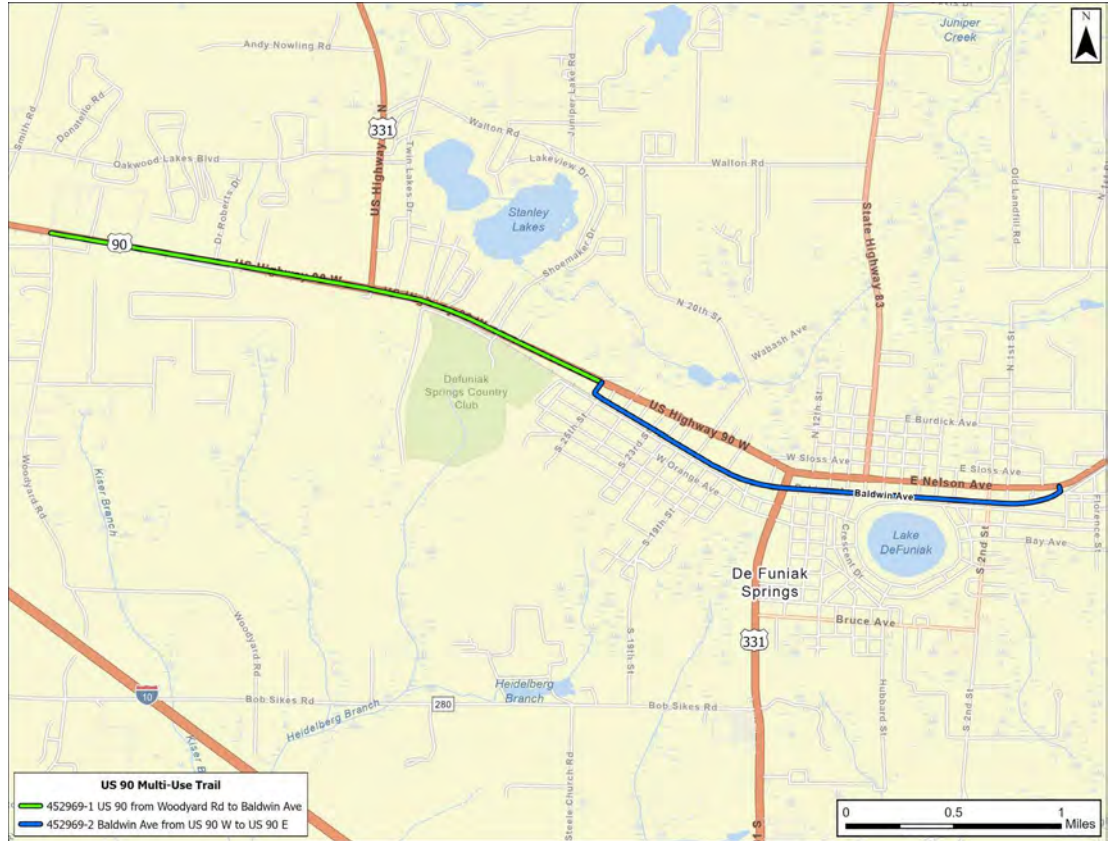
PHASE

PD&E
 Phase III (90%)

LDCA

November 2026

LOCATION MAP



FUNDING

FPID	PD&E	DESIGN	R/W	CONST	CEI
452969-1 S.R. 10 (U.S. 90) Multi-Use Path from Woodyard Road to Baldwin Avenue	Underway \$512K				
452969-2 Baldwin Avenue from S.R. 10 (U.S. 90) West to S.R. 10 (U.S. 90) East	Underway \$1.5M				
452969-3 S.R. 10 (U.S. 90) from Woodyard Road to Baldwin Avenue		FY 30 \$1.6M			
452969-4 Baldwin Avenue from S.R. 10 (U.S. 90) West to S.R. 10 (U.S. 90) East		FY 30 \$5M			

UPDATED APRIL 2026



PROJECT DEVELOPMENT & ENVIRONMENT STUDY

S.R. 10 (U.S. 90) Multi-Use Path from Woodyard Road to Baldwin Avenue
Baldwin Avenue from U.S. 90 West to U.S. 90 East
FPID: 452969-1 & 452969-2

FDOT PM

Tori White
850-330-1455

CONSULTANT PM

VHB
Kevin Freeman
407-965-0500

SUBCONSULTANTS

Metric
Carpe Diem
Community Solutions
Tierra
Southeastern Surveying
& Mapping
Snelgrove Survey
IF Rooks
SEARCH

PROJECT LIMITS

S.R. 10 (U.S. 90) from
Woodyard Road to
Baldwin Avenue;
Baldwin Avenue from
U.S. 90 West to U.S. 90
East – 4.3 Miles

COUNTY

Walton County

TPO PRIORITY

SUN Trail funded
Priority #17

CONTRACT

CAT14
NTP: 05/31/2024
EXPIRE: 05/31/2026

ETDM Number

14584

Anticipated COA

Type 2 CE

PHASE

PD&E
Phase III (90%)

LDCA

November 2026

PUBLIC MEETINGS

- ✓ [Kickoff Newsletter](#) October 31, 2024
- ✓ [Virtual Project Update](#) June 10, 2025
- Public Hearing July 14, 2026

MAJOR PURPOSE

This Project Development and Environment (PD&E) Study will consider a multi-use path along S.R. 10 (U.S. 90) in Walton County through the town of DeFuniak Springs. This project will run approximately 4.3 miles and begin along U.S. 90 at Woodyard Road to Baldwin Avenue. At U.S. 90 and Baldwin the route transition to Baldwin Avenue and travel to U.S. 90 west of DeFuniak Springs Downtown. Route alternatives are be reviewed during this PD&E Study.

CONSIDERATIONS

Y / N / TBD FOR IMPACTS

- Y **Context Classification:** C3C/C2T
- Y **Access Classification:** Class 6 Minor Arterial Rural
- N **Bridges:** Preferred alternative avoids Baldwin Ave. bridge over U.S. 331
- Y **Right of way # of parcels:** 9
- Y **Notable Utilities or Railroad:** Florida Gulf and Atlantic Railroad
- Y **Significant Stakeholder:** Walton County and City of DeFuniak Springs
- N **Interchange:** None
- N **Roundabouts (# & Location):** None
- N **Noise walls or retaining walls:** None
- Y **Species protection/avoidance measures:** Avoid trees along Live Oak Avenue
- N **Wetland Impact (acreage):**
- Y **4f or 106 Sites:** Eagle Springs Golf and Recreation and Chipley Park
- N **Pedestrian Bridges:** Alternatives evaluated a potential bridge over U.S. 331 along Baldwin Ave, but the preferred alternative does not include the bridge.
- Y **Other project-specific elements:** Will need agreements with County and City

ALTERNATIVES

This project evaluated different alignments to minimize ROW impacts associated with this project. The preferred alternative has been selected and refinements are in progress. The western preferred alternative runs along the north side of U.S. 90 from Woodyard Road to Shoemaker Drive / Country Club Drive, where it crosses on the west side to continue along the north side of the Eagle Springs Golf and Recreation Park. The trail continues eastward along the north side of Live Oak Avenue until 13th Street where it crosses to the south side of Live Oak Avenue for two blocks and then continues on the north side until reaching Chipley Park. The trail runs through Chipley Park to connect to East Main Avenue at Circle Drive. The trail then runs along the south side of Main Avenue to 2nd Street, where it crosses Main Avenue, the railroad and Baldwin Avenue on the west side of 2nd Street and then continues eastward on the north side of Baldwin Avenue to 1st Street. The final segment runs along the west side of 1st Street to U.S. 90 East.

The alignments analyzed are shown below.

UPDATED APRIL 2026



PROJECT DEVELOPMENT & ENVIRONMENT STUDY

S.R. 10 (U.S. 90) Multi-Use Path from Woodyard Road to Baldwin Avenue
 Baldwin Avenue from U.S. 90 West to U.S. 90 East
 FPID: 452969-1 & 452969-2

FDOT PM

Tori White
 850-330-1455

CONSULTANT PM

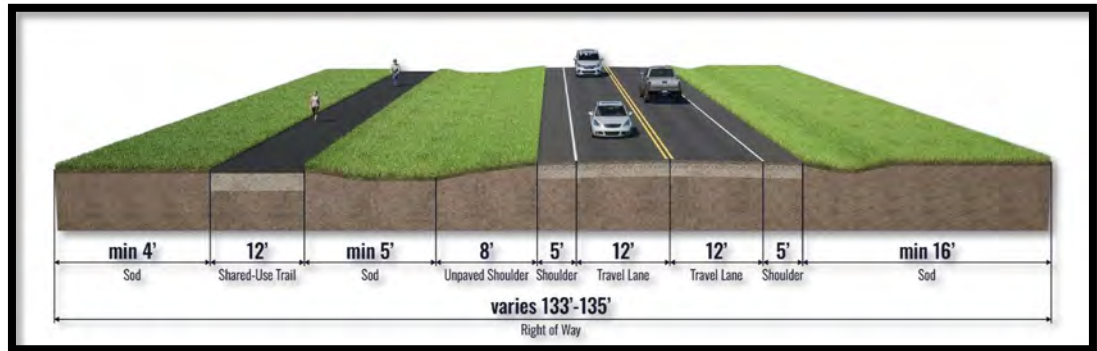
VHB
 Kevin Freeman
 407-965-0500

SUBCONSULTANTS

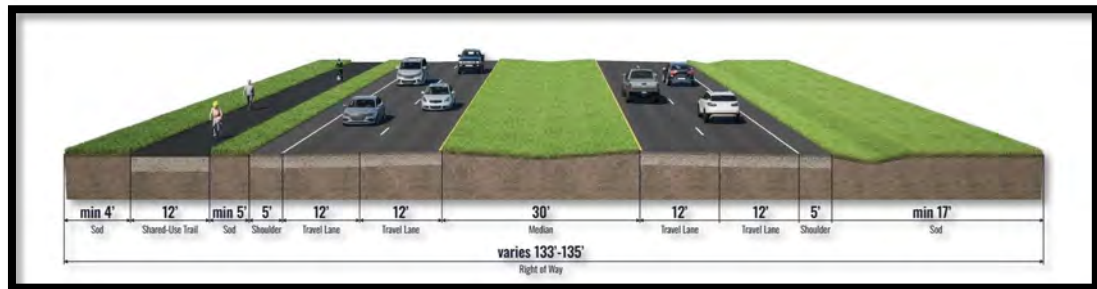
Metric
 Carpe Diem
 Community Solutions
 Tierra
 Southeastern Surveying
 & Mapping
 Snelgrove Survey
 IF Rooks
 SEARCH



TYPICAL SECTIONS



U.S. 90 from Woodyard Road to U.S. 331 North



U.S. 90 from U.S. 331 North to Country Club Drive

PROJECT LIMITS

S.R. 10 (U.S. 90) from
 Woodyard Road to
 Baldwin Avenue;
 Baldwin Avenue from
 U.S. 90 West to U.S. 90
 East – 4.3 Miles

COUNTY

Walton County

TPO PRIORITY

SUN Trail funded
 Priority #17

CONTRACT

CAT14
 NTP: 05/31/2024
 EXPIRE: 05/31/2026

ETDM Number

14584

Anticipated COA

Type 2 CE

PHASE

PD&E
 Phase III (90%)

LDCA

November 2026

UPDATED APRIL 2026



PROJECT DEVELOPMENT & ENVIRONMENT STUDY

S.R. 10 (U.S. 90) Multi-Use Path from Woodyard Road to Baldwin Avenue
 Baldwin Avenue from U.S. 90 West to U.S. 90 East
 FPID: 452969-1 & 452969-2

FDOT PM

Tori White
 850-330-1455

CONSULTANT PM

VHB
 Kevin Freeman
 407-965-0500

SUBCONSULTANTS

Metric
 Carpe Diem
 Community Solutions
 Tierra
 Southeastern Surveying
 & Mapping
 Snelgrove Survey
 IF Rooks
 SEARCH

PROJECT LIMITS

S.R. 10 (U.S. 90) from
 Woodyard Road to
 Baldwin Avenue;
 Baldwin Avenue from
 U.S. 90 West to U.S. 90
 East – 4.3 Miles

COUNTY

Walton County

TPO PRIORITY

SUN Trail funded
 Priority #17

CONTRACT

CAT14
 NTP: 05/31/2024
 EXPIRE: 05/31/2026

ETDM Number

14584

Anticipated COA

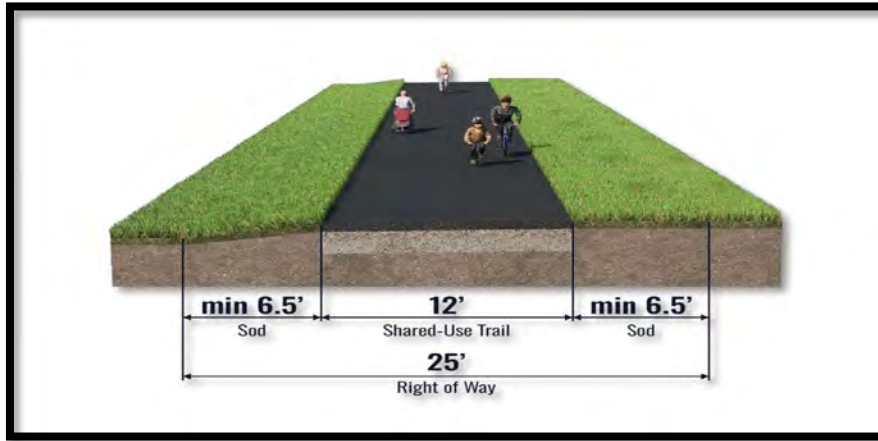
Type 2 CE

PHASE

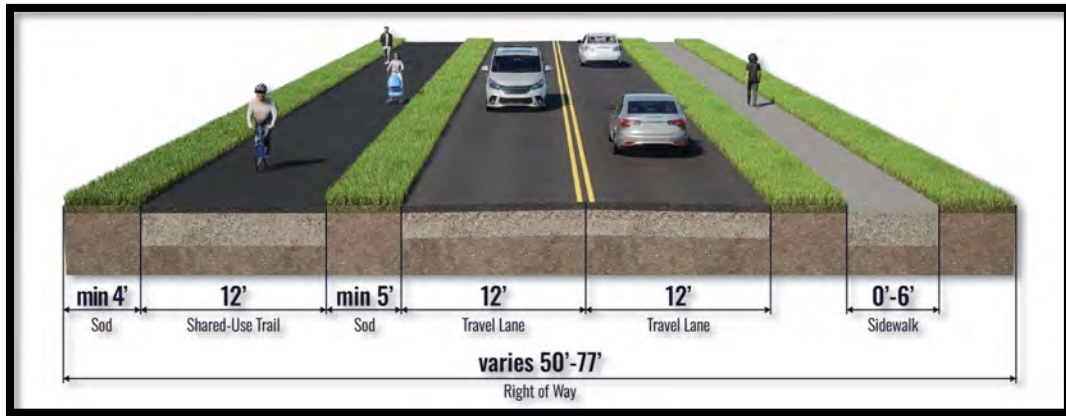
PD&E
 Phase III (90%)

LDCA

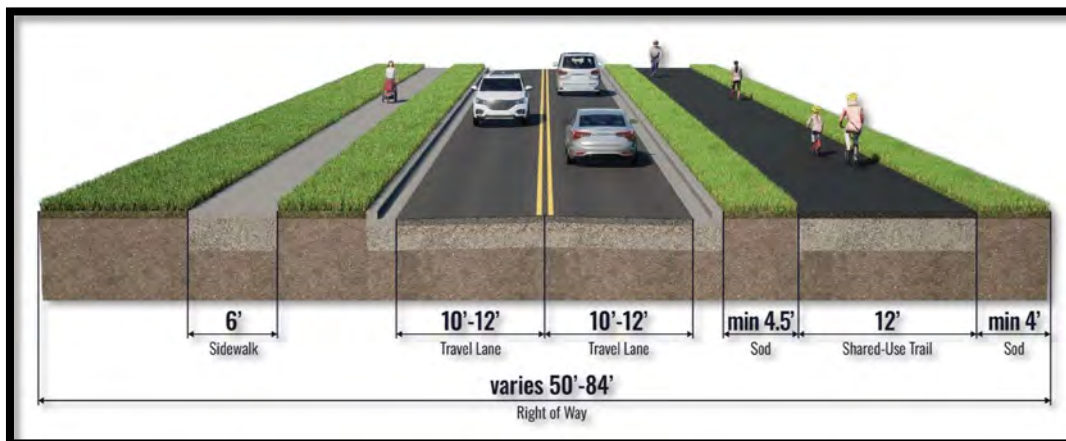
November 2026



Off-Road from Country Club Drive to 26th Street



Live Oak Avenue from 26th Street to U.S. 331 South and 2nd Street from Circle Drive to Baldwin Avenue and Baldwin Avenue from 2nd Street to 1st Street



Live Oak Avenue from U.S. 331 South to Circle Drive and Circle Drive and Circle Drive from Live Oak Avenue to 2nd Street

UPDATED APRIL 2026



PROJECT DEVELOPMENT & ENVIRONMENT STUDY

S.R. 10 (U.S. 90) Multi-Use Path from Woodyard Road to Baldwin Avenue
Baldwin Avenue from U.S. 90 West to U.S. 90 East
FPID: 452969-1 & 452969-2

FDOT PM

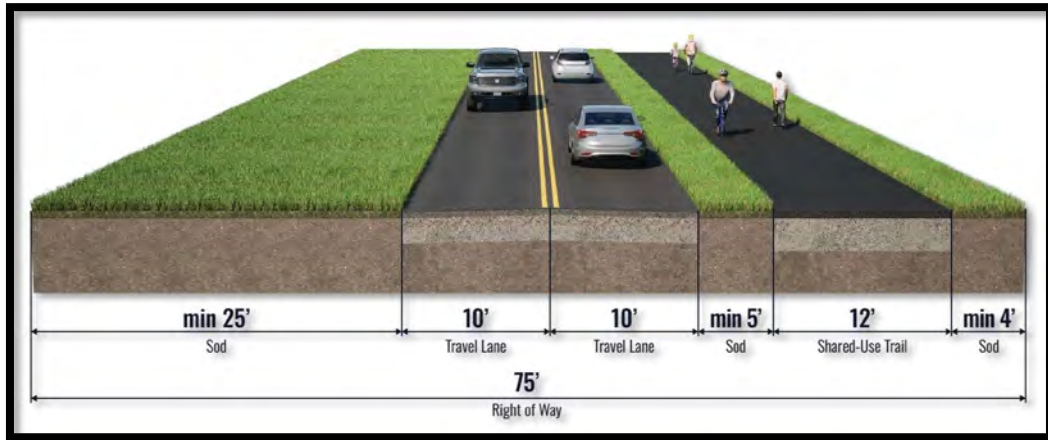
Tori White
850-330-1455

CONSULTANT PM

VHB
Kevin Freeman
407-965-0500

SUBCONSULTANTS

Metric
Carpe Diem
Community Solutions
Tierra
Southeastern Surveying
& Mapping
Snelgrove Survey
IF Rooks
SEARCH



1st Street from Baldwin Avenue to U.S. 90

PROJECT LIMITS

S.R. 10 (U.S. 90) from
Woodyard Road to
Baldwin Avenue;
Baldwin Avenue from
U.S. 90 West to U.S. 90
East – 4.3 Miles

COUNTY

Walton County

TPO PRIORITY

SUN Trail funded
Priority #17

CONTRACT

CAT14
NTP: 05/31/2024
EXPIRE: 05/31/2026

ETDM Number

14584

Anticipated COA

Type 2 CE

PHASE

PD&E
Phase III (90%)

LDCA

November 2026

UPDATED APRIL 2026

2026 RRTP MEETINGS

FEB 18

RRTP TAC Meeting

- 📍 **Chautauqua Hall**, 95 Circle Dr, Defuniak Springs, FL 32435
- 🕒 **9:30 AM**
- 📄 **Expected TAC Items:** Ranking TA/TRIP Applications & Project Priorities Open

MAY 20

RRTP TAC Meeting

- 📍 **Chautauqua Hall**, 95 Circle Dr, Defuniak Springs, FL 32435
- 🕒 **9:30 AM**
- 📄 **Expected TAC Items:** Adopt RRTP Project Priorities

AUG 27

RRTP TAC Meeting

- 📍 **Chautauqua Hall**, 95 Circle Dr, Defuniak Springs, FL 32435
- 🕒 **9:30 AM**
- 📄 **Expected TAC Items:** Grant Opportunities Overview

DEC 10

RRTP TAC Meeting

- 📍 **Location To Be Announced**
- 🕒 **9:30 AM**
- 📄 **Expected TAC Items:** FDOT Work Program